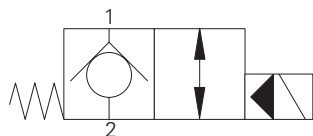


# SV13-20-C / O - Solenoid valve

Poppet type, 2-way, 2-position, Normally open & Normally closed  
227 L/min (60 USgpm) • 350 bar (5000 psi)

A

## SV13-20-C Normally Closed

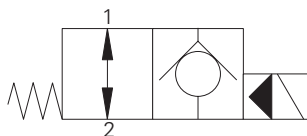


### Operation

In the de-energized position the valve blocks flow from port 2 to 1 and free flow is allowed from port 1 to 2.

When the solenoid is energized the pilot poppet is pulled off the seat allowing the valve to open in both directions.

## SV13-20-O Normally Open



### Operation

In the de-energized position the valve allows free flow in both directions.

When the solenoid is energized the pilot poppet closes the orifice and the valve closes blocking flow from port 2 to 1 while allowing free flow from port 1 to 2.

## Performance data

### Ratings and specifications

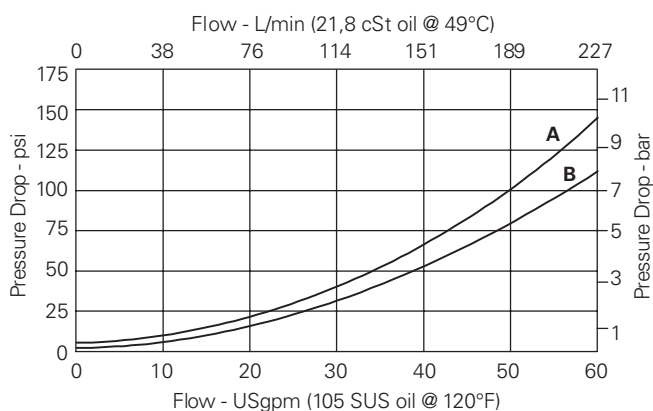
Performance data is typical with fluid at 21,8 cSt (105 SUS) and 49°C (120°F)

Typical application pressure (all ports)	350 bar (5000 psi)
Rated flow	227 L/min (60 USgpm)
Internal leakage	less than 5 drops/min, max @ 350 bar (5000 psi)
Temperature range	-40° to 100°C (-40° to 212°F)
Cavity	C-20-2
Weight cartridge only	0,62 kg (1.37 lbs)
Fluids	All general purpose hydraulic fluids such as: MIL-H-5606, SAE 10, SAE 20 etc.
Filtration	Cleanliness code 18/16/13
Seal kit	889615 (Buna-N), 889619 (Viton®)

Viton is a registered trademark of E.I. DuPont

## SV13-20-C Pressure drop

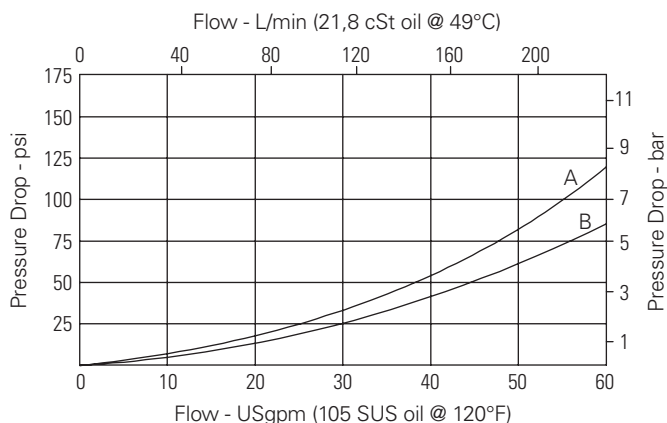
Cartridge only



**A** - Port 2 to port 1 energized  
**B** - Port 1 to port 2 de-energized

## SV13-20-O Pressure drop

Cartridge only



**A** - Port 2 to port 1 de-energized  
**B** - Port 1 to port 2

Where measurements are critical request certified drawings. We reserve the right to change specifications without notice.

## A

### Model code

**SV13 – 20 (V) – C (M) – (S) \*\* – \*\*\*\* \* H – 00**

1 2 3 4 5 6 7 8 9 10 11

**SV13** - Solenoid valve

**20** - 20 size

**Blank** - Buna-N  
**V** - Viton®

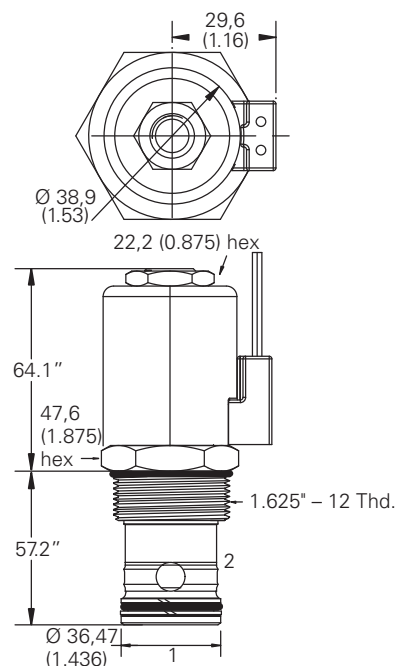
**C** - Normally closed  
**O** - Normally open

**Blank** - No manual override  
**M** - Manual override  
**P** - Push type  
**S** - Screw type

For valve dimensions with manual override option installed see page A-980.

**Blank** - Cartridge only  
**S** - Steel

### Cartridge only



Code	Port size	Housing number
------	-----------	----------------

<b>0</b>	Cartridge only	
<b>6G</b>	3/4" BSPP	02-175110
<b>8G</b>	1" BSPP	02-175111
<b>12T</b>	SAE 12	02-175108
<b>16T</b>	SAE 16	02-175109

See section J for housing details.

**00** - No coil

**12D - 12VDC**

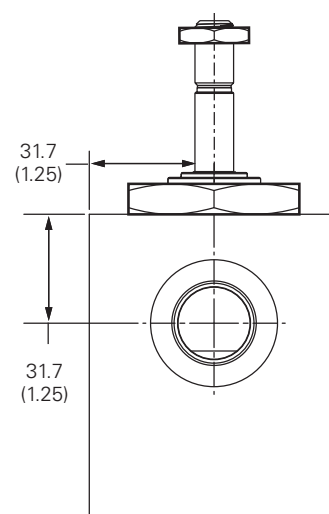
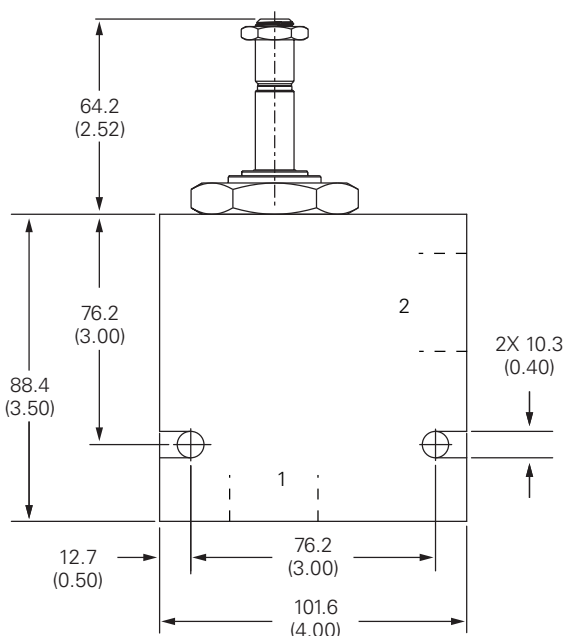
## 24D - 24VDC

**115A - 115VAC**

**115A** - 115VAC \*Optional arc suppression diode.

\*Optional arc suppression diode.

## Installation drawing



**Blank** - No coil

**G** - ISO 4400 DIN 43650

**W** - Flying lead

**N** - Deutsch (D

**Y** - Amp JR (DC only)

**D** - Metripack 150 male  
(DC only)

**J - Metripack 280 male**  
(DC only)

**E - Weather-Pack (Packard)**  
female on wire leads

**F** - Weather-Pack (Packard)  
male on wire leads

**H** - 10 Series, 29 W

For coil part numbers and dimensions see section C.

**00** - None

(Only required if valve has special features, omitted if "00".)

*Where measurements are critical request certified drawings. We reserve the right to change specifications without notice.*