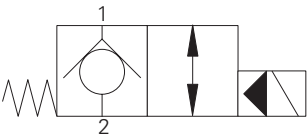


SV2-20-C - Solenoid valve

Poppet type, 2-way, 2-position Bi-directional, normally closed (free reverse flow)
227 L/min (60 USgpm) • 210 bar (3000 psi)



Operation

In the de-energized position the valve blocks flow from port 2 to 1 and free flow is allowed from port 1 to 2.

When the solenoid is energized the pilot poppet is pulled off the seat allowing the valve to open in both directions.

Performance data

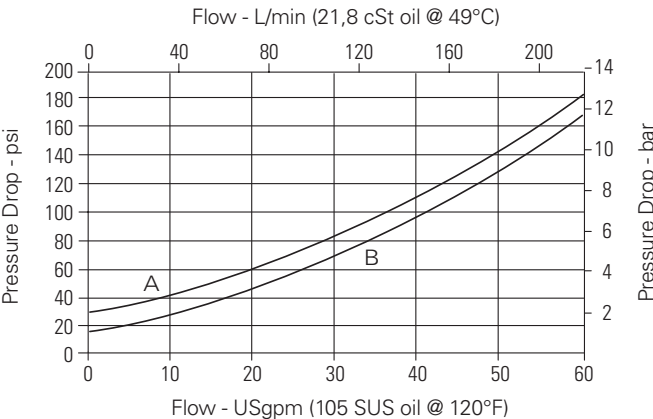
Ratings and specifications

<i>Performance data is typical with fluid at 21,8 cSt (105 SUS) and 49°C (120°F)</i>	
Typical application pressure (all ports)	210 bar (3000 psi)
Rated flow	227 L/min (60 USgpm)
Internal leakage, port 2 to port 1	less than 5 drops/min, max @ 210 bar (3000 psi)
Temperature range	-40° to 120°C (-40° to 248°F)
Cavity	C-20-2
Weight including coil	1,2 kg (2.70 lbs)
Fluids	All general purpose hydraulic fluids such as: MIL-H-5606, SAE 10, SAE 20 etc.
Filtration	Cleanliness code 18/16/13
Seal kit	889615 (Buna-N), 889619 (Viton®)

Viton is a registered trademark of E.I. DuPont

Pressure drop

Cartridge only



A - Port 1 to port 2 de-energized

B - Port 2 to port 1 energized

SV2-20-C - Solenoid valve

Poppet type, 2-way, 2-position Bi-directional, normally closed (free reverse flow)
227 L/min (60 USgpm) • 210 bar (3000 psi)

Model code

SV2 - 20 (V) - C (*) - * - **** * - 00**

1 2 3 4 5 6 7 8 9

A

1 Function

SV2 - Solenoid valve

2 Size

20 - 20 size

3 Seal material

Blank - Buna-N

V - Viton®

4 Style

C - Normally closed

5 Manual override option

Blank - No manual override

M - Knob type

R - Cable type

For valve dimensions with manual override option installed see page A-980.

6 Port size

Code	Port size	Housing number
0	Cartridge only	
8B	1" BSPP	02-175464*
16T	SAE 16	566409*
6G	3/4" BSPP	876732
8G	1" BSPP	876734
12H	SAE 12	876733
16H	SAE 16	876735

*Light duty housing.
See section J for housing details.

8 Connector types

Blank - No coil

G - ISO 4400 DIN 43650

W - Flying lead

N - Deutsch (DC only)

Y - Amp JR (DC only)

D - Metripack 150 male (DC only)

J - Metripack 280 male (DC only)

E - Weather-Pack female

F - Weather-Pack male

For coil part numbers and dimensions see section C.

7 Voltage rating

00 - No coil

12D - 12VDC

24D - 24VDC

115A - 115VAC

230A - 230VAC

12B - 12VDC/w diode*

24B - 24VDC/w diode*

*Optional arc suppression diode.

9 Special features

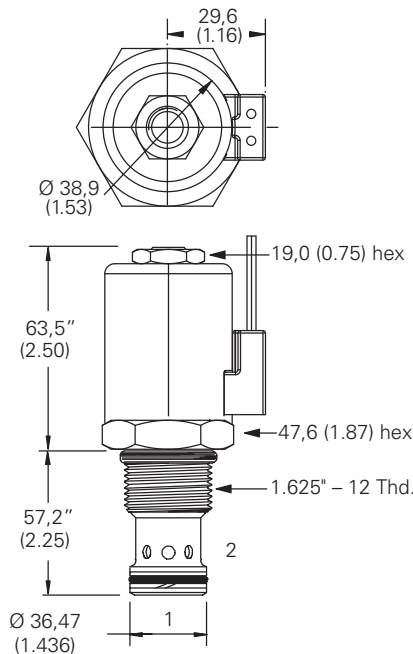
00 - None

(Only required if valve has special features, omitted if "00".)

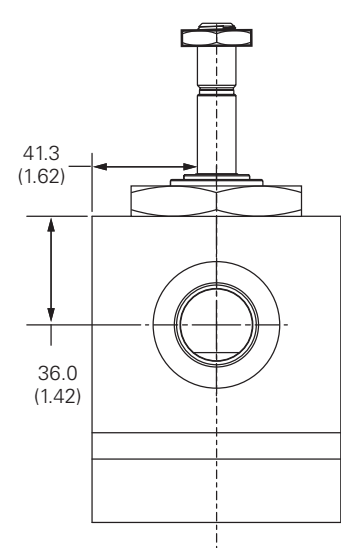
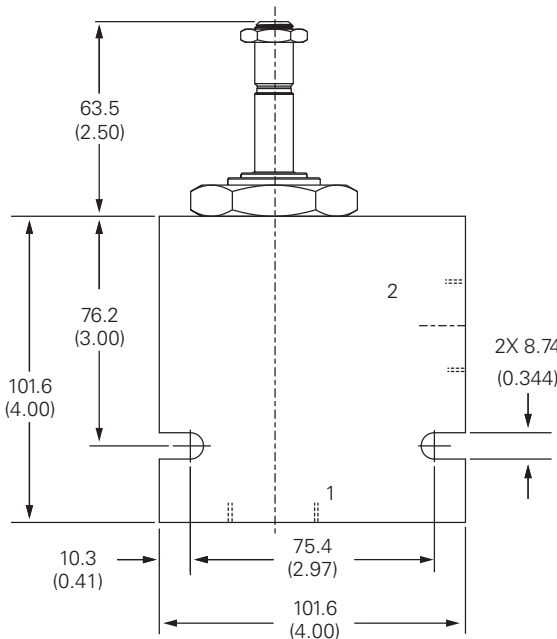
Note: Use J series, 23 W coils with this solenoid valve.

Dimensions - mm (inch)

Cartridge only



Installation drawing



Where measurements are critical request certified drawings. We reserve the right to change specifications without notice.