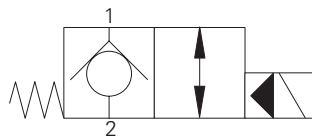


SV3-12-C / O - Solenoid valve

Poppet type, 2-way, 2-position, Normally open & Normally closed
114 L/min (30 USgpm) • 210 bar (3000 psi)

SV3-12-C Normally Closed

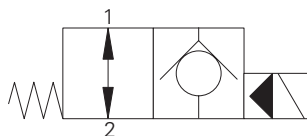


Operation

In the de-energized position the valve blocks flow from port 2 to 1 and free flow is allowed from port 1 to 2.

When the solenoid is energized the pilot poppet is pulled off the seat allowing the valve to open in both directions.

SV3-12-O Normally Open



Operation

In the de-energized position the valve allows free flow in both directions.

When the solenoid is energized the pilot poppet closes the orifice and the valve closes blocking flow from port 2 to 1 while allowing free flow from port 1 to 2.

Performance data

Ratings and specifications

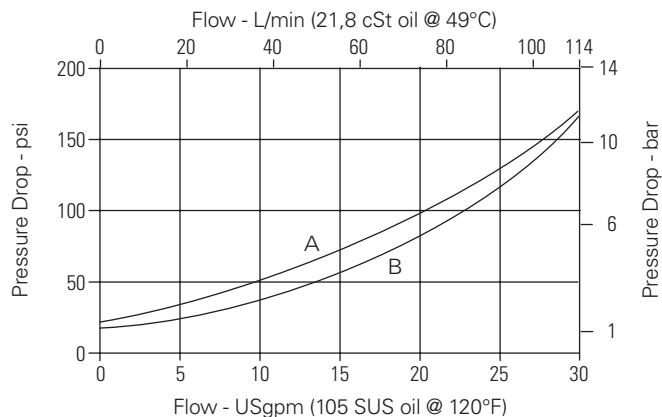
Performance data is typical with fluid at 21,8 cSt (105 SUS) and 49°C (120°F)

Typical application pressure (all ports)	210 bar (3000 psi)
Rated flow	114 L/min (30 USgpm)
Internal leakage (port 2 to port 1)	less than 5 drops/min, max @ 210 bar (3000 psi)
Temperature range	-40° to 120°C (-40° to 248°F)
Response times for normally close (100% rated voltage and flow)	Energize: 75 ms De-Energize: 150 ms
Cavity	C-12-2 or C-12-2U Add "U" after number if undercut is required. If undercut is not specified, expect 10 psi @ 15 USgpm and 20 psi @ 30 USgpm higher pressure drop.
Weight including coil	0,336 kg (0.74 lbs)
Fluids	All general purpose hydraulic fluids such as: MIL-H-5606, SAE 10, SAE 20 etc.
Filtration	Cleanliness code 18/16/13
Seal kit	02-165889 (Buna-N), 02-165888 (Viton®)

Viton is a registered trademark of E.I. DuPont

SV3-12-C Pressure drop

Cartridge only

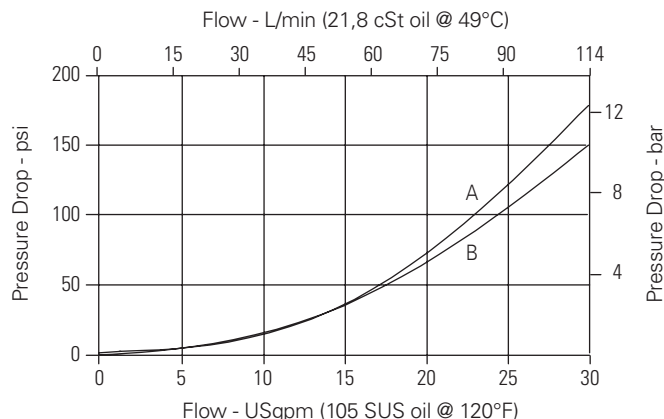


A - Port 1 to port 2 de-energized

B - Port 2 to port 1 energized

SV3-12-O Pressure drop

Cartridge only



A - Port 2 to port 1 de-energized

B - Port 1 to port 2 energized

Where measurements are critical request certified drawings. We reserve the right to change specifications without notice.

SV3-12-C / O - Solenoid valve

Poppet type, 2-way, 2-position, Normally open & Normally closed
114 L/min (30 USgpm) • 210 bar (3000 psi)

Model code

SV3 - 12 (V) - * (*) - (A) - * - **** * - 00**

1 2 3 4 5 6 7 8 9 10

A

1 Function

SV3 - Solenoid valve

2 Size

12 - 12 size

3 Seal material

Blank - Buna-N
V - Viton®

4 Style

C - Normally closed
O - Normally open

5 Manual override option

Blank - No manual override
M - Knob type
R - Cable type
P - Push type
S - Screw type
For valve dimensions with manual override option installed see page A-980.

6 Valve housing material

Omit for cartridge only
A - Aluminum (standard)
S - Steel

7 Port size

Code	Port size	Housing number	
		Aluminium	Steel
0	Cartridge only		
4G	1/2" BSPP	02-161118	02-172062
4GU	1/2" BSPP	02-161116	02-172512
6G	3/4" BSPP	02-161117	02-169665
6GU	3/4" BSPP	02-161115	02-162922
10T	SAE 10	02-160640	02-169744
10TU	SAE 10	02-160641	02-169817
12T	SAE 12	02-160644	02-169782
12TU	SAE 12	02-160645	02-169790

See section J for housing details.

9 Connector types

Blank - No coil
G - ISO 4400 DIN 43650
W - Flying lead
N - Deutsch (DC only)
Y - Amp JR (DC only)
D - Metripack 150 male (DC only)
J - Metripack 280 male (DC only)
E - Weather-Pack female
F - Weather-Pack male

10 Special features

00 - None
(Only required if valve has special features, omitted if "00.")

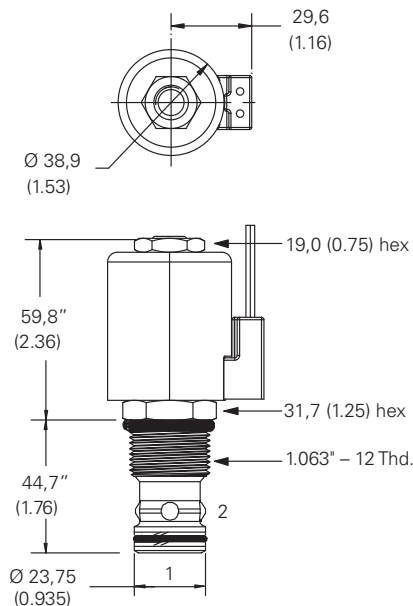
Note: Use J series, 23 W coils with this solenoid valve.

8 Voltage rating

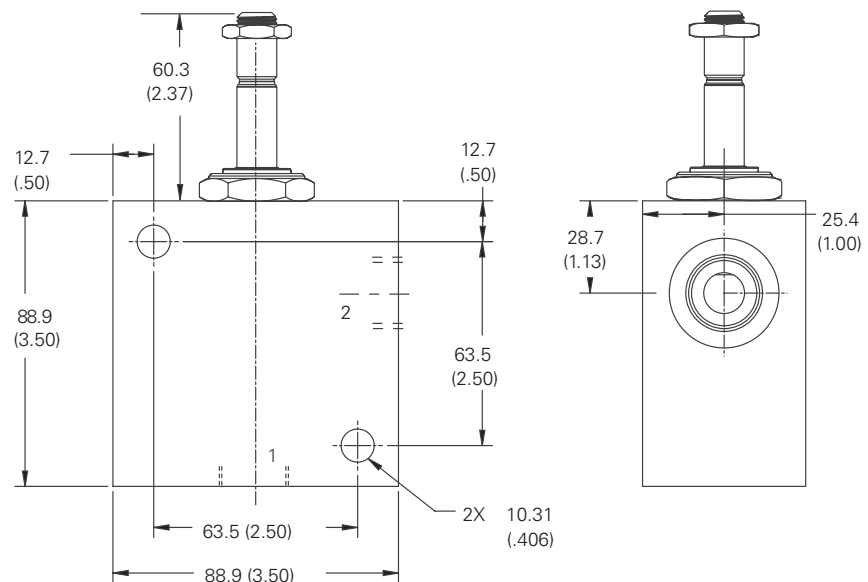
00 - No coil
12D - 12VDC
24D - 24VDC
115A - 115VAC
230A - 230VAC
12B - 12VDC/w diode*
24B - 24VDC/w diode*
*Optional arc suppression diode.

Dimensions - mm (inch)

Cartridge only



Installation drawing (Aluminum)



Where measurements are critical request certified drawings. We reserve the right to change specifications without notice.