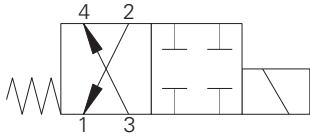


# SV3-10-4/4M/4R - Solenoid valve

Spool type, 4-way, 2-position  
23 L/min (6 USgpm) • 210 bar (3000 psi)

A



## Operation

In the de-energized position flow is allowed from port 3 to port 4 and from port 2 to port 1.  
In the energized position all ports are blocked.

## Performance data

### Ratings and specifications

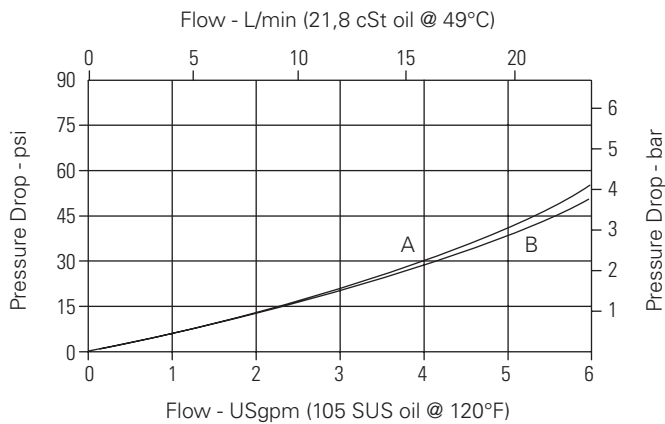
Performance data is typical with fluid at 21,8 cSt (105 SUS) and 49° C (120° F)

Typical application pressure (all ports)	210 bar (3000 psi)
Rated flow	23 L/min (6 USgpm)
Internal leakage	164 cm <sup>3</sup> /min (10 in <sup>3</sup> /min) max @ 210 bar (3000 psi)
Temperature range	-40° to 120°C (-40° to 248°F)
Cavity	C-10-4
Weight including coil	0,44 kg (0.96 lbs)
Fluids	All general purpose hydraulic fluids such as: MIL-H-5606, SAE 10, SAE 20 etc.
Filtration	Cleanliness code 18/16/13
Seal kit	889625 (Buna-N), 566080 (Viton®)

Viton is a registered trademark of E.I. DuPont

## Pressure drop

Cartridge only



A - Port 3 to port 4  
B - Port 1 to port 2

Where measurements are critical request certified drawings. We reserve the right to change specifications without notice.

