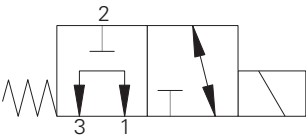


# SV2M-12-3P - Solenoid valve

Spool type, 3-way, 2-position  
Up to 34 L/min (9 USgpm) • 210 bar (3000 psi)



## Operation

In the de-energized position this valve allows flow from port 1 to 3 while port 2 is blocked.  
In the energized position flow is allowed from port 2 to port 1 while port 3 is blocked.

## Performance data

### Ratings and specifications

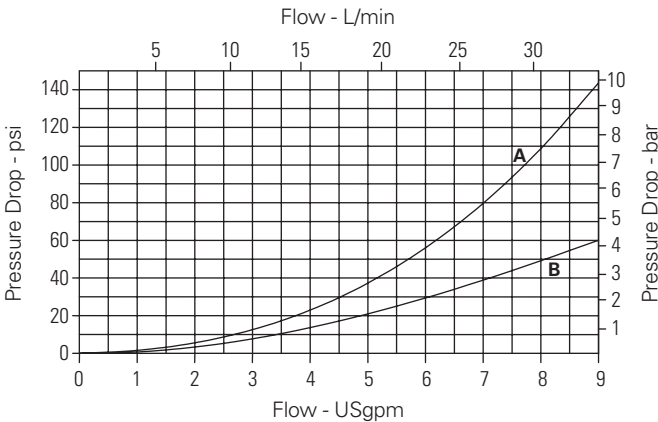
Performance data is typical with fluid at 21,8 cST (105 SUS) and 49°C (120°F)

Typical application pressure	210 bar (3000 psi)
Rated flow	38 L/min (10 USgpm) Max flow port 1 to port 3-34 L/min (9 USgpm)
Internal leakage	300 cm <sup>3</sup> /min (21.5 in <sup>3</sup> /min) max @ 210 bar (3000 psi)
Temperature range	-40° to 120°C (-40° to 248°F)
Cavity	C-12-3
Weight including coil	0,86 kg (1.9 lbs)
Fluids	All general purpose hydraulic fluids such as: MIL-H-5606, SAE 10, SAE 20, etc.
Filtration	Cleanliness code 18/16/13
Seal kit	9900171-000 (Buna-N), 9900172-000 (Viton®)

Viton is a registered trademark of E.I. DuPont

## Pressure drop

Cartridge only



**A** - Port 2 to port 1 energized  
**B** - Port 1 to port 3 de-energized

Where measurements are critical request certified drawings. We reserve the right to change specifications without notice.

# SV2M-12-3P - Solenoid valve

Spool type, 3-way, 2-position  
Up to 34 L/min (9 USgpm) • 210 bar (3000 psi)

## Model code

<b>SV2</b>	<b>*</b>	<b>- 12</b>	<b>*</b>	<b>- 3P</b>	<b>- ****</b>	<b>- ****</b>	<b>*</b>	<b>*</b>	<b>**</b>	<b>- **</b>
<b>1</b>	<b>2</b>	<b>3</b>	<b>4</b>	<b>5</b>	<b>6</b>	<b>7</b>	<b>8</b>	<b>9</b>	<b>10</b>	<b>11</b>

### 1 Function

**SV2** - Solenoid valve

### 2 Max flow

**M** - 38 L/min (10 USgpm)

### 3 Size

**12** - 12 size

### 4 Seal material

**Blank** - Buna-N

**V** - Viton®

### 5 Style

**3P** - 3 way, push type manual override

### 6 Port size

Code	Port size	Housing number
<b>0</b>	Cartridge only	
<b>A6G</b>	3/4" BSPP	02-161816
<b>A12H</b>	SAE 12	02-160646

### 7 Voltage rating

**00** - No coil

**12D** - 12VDC

**24D** - 24VDC

**12B** - 12VDC/w diode\*

**24B** - 24VDC/w diode\*

\*Optional arc suppression diode.

### 8 Connector types

**Blank** - No coil

**G0** - ISO 4400 DIN 43650

**N0** - Deutsch male, DT04-2P, integrated

**Y0** - Integrated Amp DC

**D0** - MetriPack® 150 Male, Integrated (DC Only)  
Mating connector : Delphi 12052641.

For coil dimensions see section C.

### 9 Coil types

**Blank** - No coil

**R** - R series (30W) Large ToughCoil

### 10 Coil special features

**Blank** - No coil

**00** - No special feature

### 11 Special features

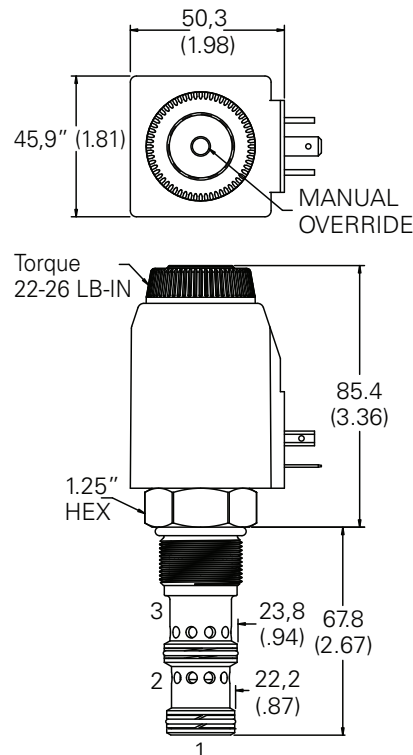
**00** - None

(Only required if valve has Special features, omitted if "00".)

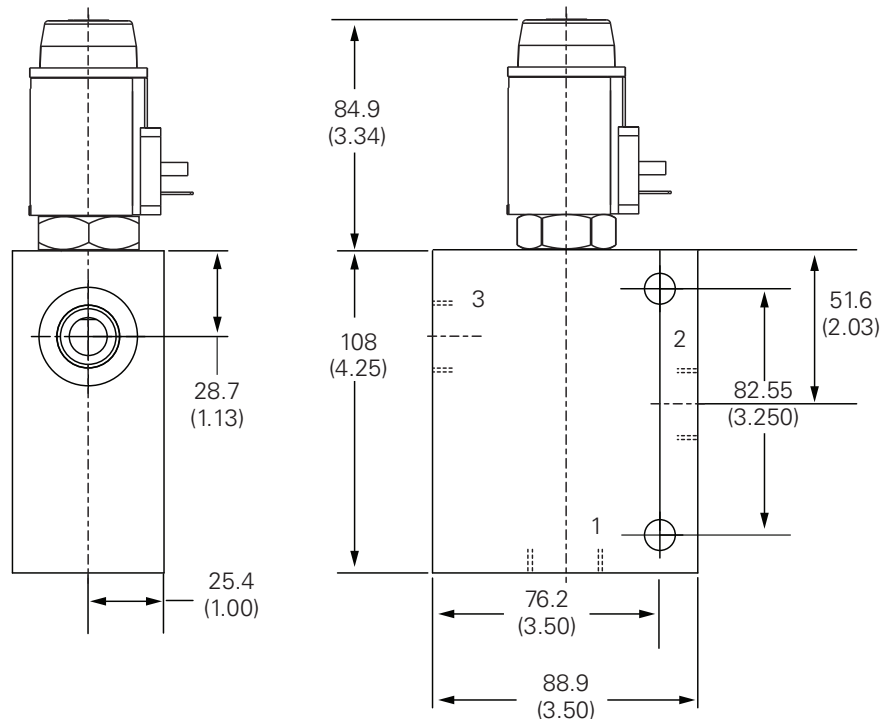
**SF** - Soft shift

## Dimensions - mm (inch)

### Cartridge only



### Installation drawing



Where measurements are critical request certified drawings. We reserve the right to change specifications without notice.